

# QuickClick SEPARATOR



 **Cen-Tec<sup>®</sup>  
Systems**  
(appearance may vary slightly)

# System Start-Up



**CONSIDER SAFETY PRACTICES INSTALLATION AND MAINTENANCE INSTRUCTIONS AND YOUR WET/DRY VACUUM'S OWNER'S MANUAL BEFORE ASSEMBLING AND USING THE QUICK CLICK**

1. Do not vacuum anything that is burning or smoking, such as cigarettes, matches, hot ashes, or any hot substance!
2. Do not use the separator near flammable or combustible liquids, gases, or explosive dusts, such as gasoline or other fuels, lighter fluid, cleaners, oil-based paints, natural gas, hydrogen, coal dust, magnesium dust, grain dust, aluminum dust, sugar dust, flour dust, gun powder, or other combustible.
3. To reduce the risk of health hazards from vapors or dusts, do not vacuum toxic materials unless a HEPA filter vacuum is used. Taking care of disposal is necessary to protect the user.
4. Dust can be flammable and explosive. Some dust can be toxic or cause allergic reactions.
5. Wood dust mixtures are highly flammable and can be explosive. NEVER introduce sparks or sources of ignition into collector.
  - a. Empty drum after each use.
  - b. Ground system.
6. NEVER leave wood dust in a building or vehicle.
7. Keep fire extinguishers handy at all times.
8. Can be used for collecting non-flammable liquids.
9. Dispose of waste in a FIRE SAFE AREA.



**SOME DUSTS ARE HIGHLY FLAMMABLE OR EXPLOSIVE. LEARN/KNOW WHAT YOU ARE DEALING WITH. FOLLOW ALL LOCAL, STATE, FEDERAL, & NFPA CODES AND GUIDE LINES.**

# System Contents

Part Number	Part Description	Qty
95798	Quick Click Separator	1
09768	BHCS 5/16" - 18Z	4
09790	Flange Nut 5/16	4
09801	Base Gasket	1
	5/16 Allen Wrench	1

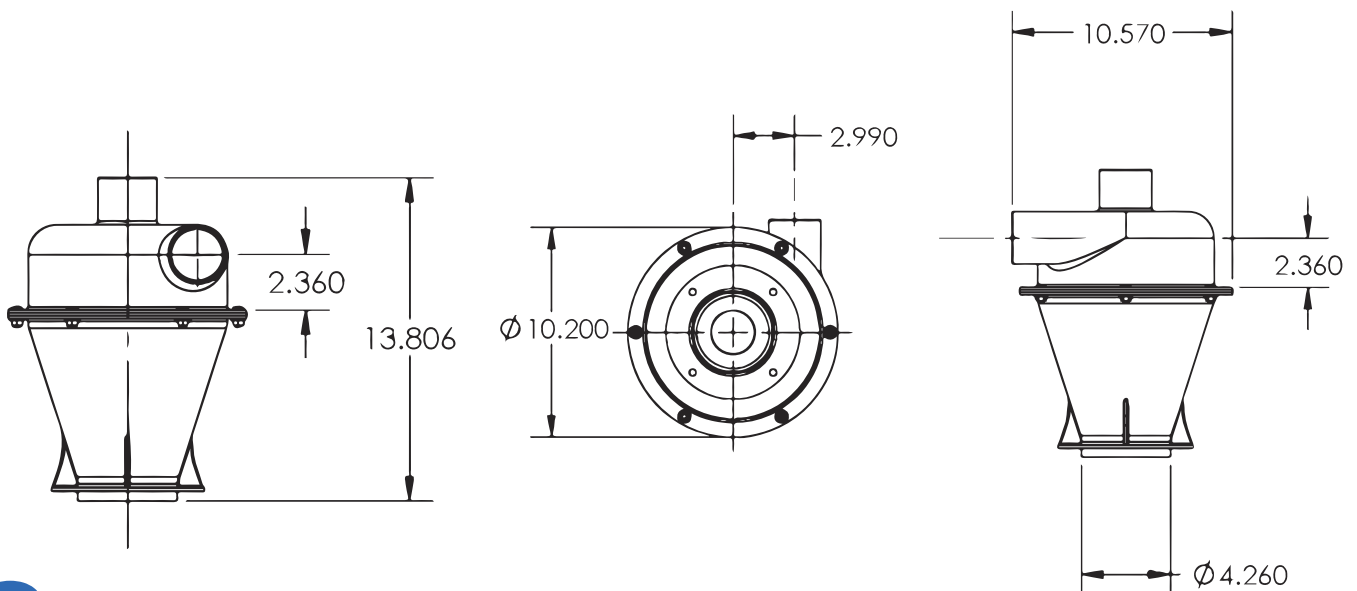
Please unpack the parts carefully and confirm you have received each item listed here.

## You will need the following:

- Air tight dust container and lid
- Power Drill
- 3/8" Drill bit
- Key hole saw
- Wet/Dry Vacuum
- Vacuum Hose
- Vacuum hose adapters

# System Dimensions

Dimensions subject to slight variations in manufacturing.



# Assembly Instructions

1

Draw 4.25" diameter circle on your supplied lid. Carefully cut out 4.25" hole in lid. Use 5/16" drill bit to drill bolt holes.

*Note: Use the Gasket for reference.*

2

Turn Quick Click upside-down. Place gasket on the base of the Cyclone and align all the holes. Place the topside of the supplied lid against Gasket and align all the holes. Secure Separator, gasket and lid together using four bolts, and four flange nuts.

*Note: Thoroughly tighten hardware to eliminate air leaks.*

3

Put Quick Click and lid on top of your dust container and seal it airtight.

*Note: We recommend a drum or container that will withstand the vacuum pressure, otherwise the container may collapse when in use. The larger the container, the sturdier the walls must be to prevent collapse.*

4

Make sure there are no air leaks at the connections. Review for common leak points.

*Note: Any air leak in the lid or drum may affect separation performance. Make sure to check your dust drum frequently so you do not overfill it.*

5

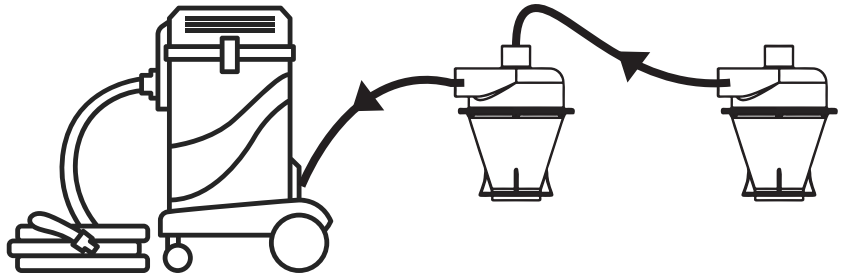
Consider use of an air flow regulator to reduce vacuum sealing.

3

# Adding Additional Separators

## Attach in Series

Increases particle efficiency and helps in very fine dust situations.

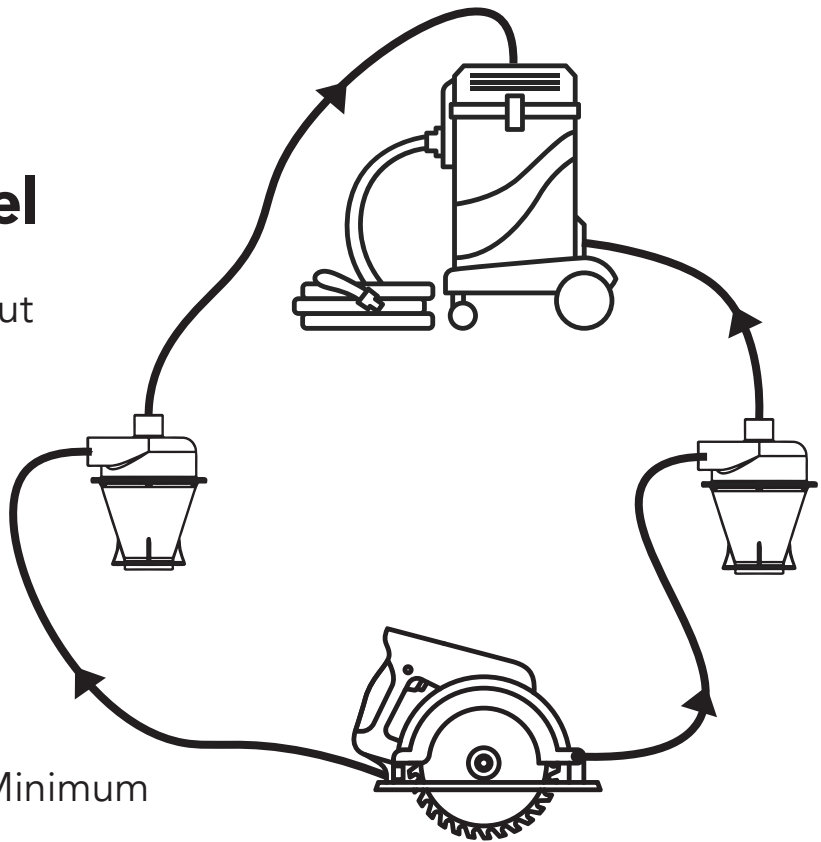


Ideal Solution: 140 CFM Minimum  
160 CFM + Optimal

---

## Attach in Parallel

Same particle efficiency but increases the CFM.

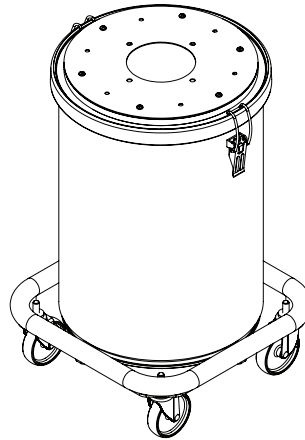
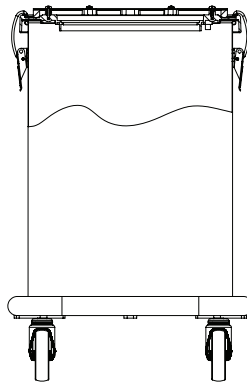
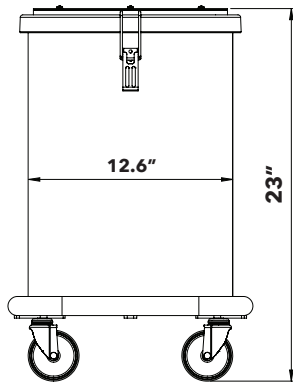


Ideal Solution: 140 CFM Minimum  
160 CFM + Optimal

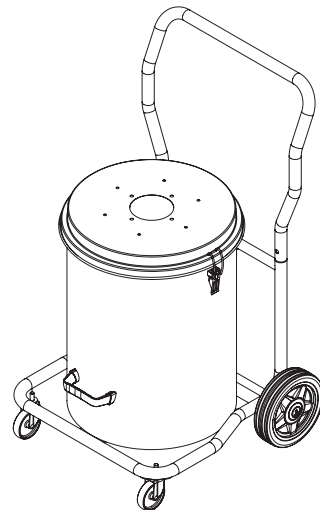
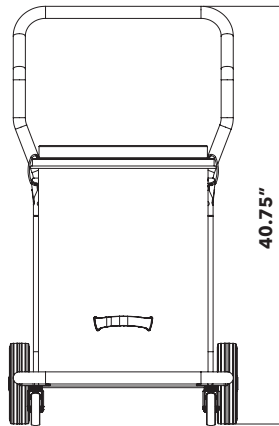
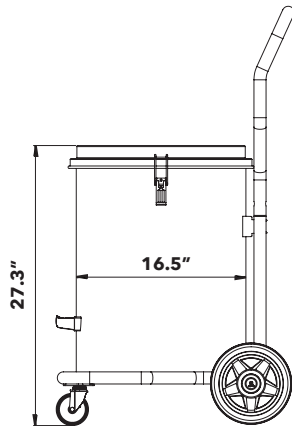
# Accessories

Part Number	Part Description
09485	37L Stainless Recovery Bin (10 Gallon)
09856	77L Stainless Recovery Bin (20 Gallon)
41213	2.63" to 1.25" Vacuum Adaptor
68756	2.5" to 1.5" Vacuum Adaptor
34707	1.5" to 1.25" Hose End
95798	Quick Click Separator

09485



09856



# Troubleshooting

Problem	Cause	Solution
Not separating well.	Air leaks in the system	<ol style="list-style-type: none"><li>1. Check for leaks between the lid and the dust drum.</li><li>2. Check for holes or leaks in the dust drum.</li><li>3. Check for leaks along the gasket of the Quick Click.</li></ol>
Material swirls in Quick Click and won't drop into the dust container.		
Material swirls in Quick Click and won't drop into the dust container.	Collecting large bulky material	<ol style="list-style-type: none"><li>1. Large, bulkier material might swirl. Restart or temporarily cut off air flow to drop material down.</li><li>2. Consider taking off the baffle if situation persists.</li></ol>
Low Air Volume	System clogged	<ol style="list-style-type: none"><li>1. Clean vacuum and the vacuum filter per the manufacturer's specs.</li><li>2. Check all hose connections for a blockage in the hose.</li></ol>
Drum Collapsing	Blocked airflow	<ol style="list-style-type: none"><li>1. Ensure at least one gate is open during operation of your dust collector to prevent system sealing.</li></ol>
Hose pulling off	Hose connections not tight	<ol style="list-style-type: none"><li>1. Due to the varied hose diameters, couplers can be used. They are available at <a href="http://centecsystems.com">centecsystems.com</a></li><li>2. Use a hose clamp if connecting hose over the separation ports.</li><li>3. Securing the hose can be effected with a sheet metal screw if a permanent connection is desired.</li></ol>

# QuickClick SEPARATOR

Thank you for your purchase from our Quick Click series of dust collection accessories!

Our intention is your complete satisfaction with this purchase decision. We welcome comments, questions, or suggestions on the items you have purchased related to their suitability in your application.

You can email inquiries to **customerservice@centecsystems.com** or if preferred call us at **1-800-833-2822** during normal business hours 8:00 am to 5:00 pm CST Monday to Friday.

## Warranty Information

Cen-Tec Systems Standard Warranty Provisions. 2 years domestic, 90 days in commercial use.

Subject to the conditions and exceptions stated in this warranty Cen-Tec Systems warrants the products sold by Cen-Tec Systems to be free from defects in materials and workmanship under normal residential use and service for two (2) years and, or, 90 days in commercial application from the date of delivery on the presentation of the original contract or invoice. A copy of the original bill of sale must accompany all warranty requests. If one is not produced as required the manufacturers date code will not be used.



**Cen-Tec<sup>®</sup>**  
**Systems**

**centecsystems.com**  
**1-800-833-2822**